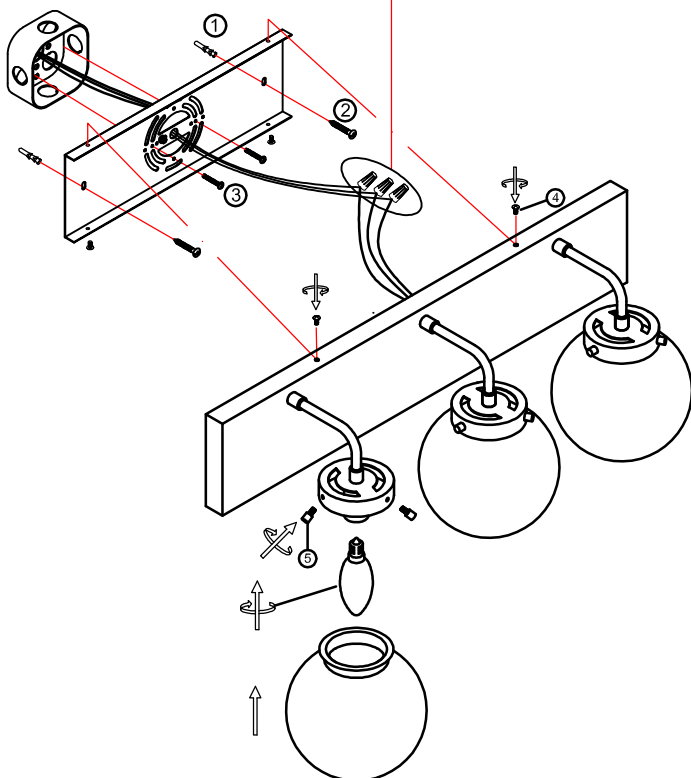
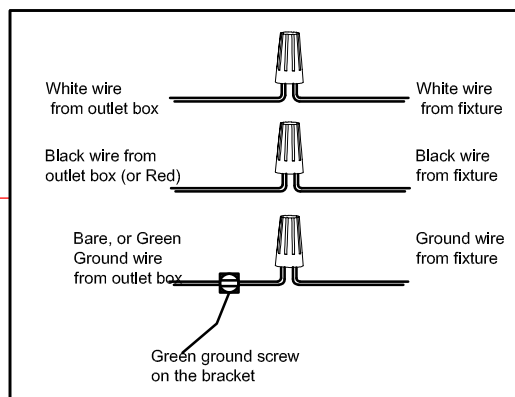


# INSTRUCTION MANUAL

- 1. Always ensure the power is completely OFF before any installation or maintenance.**
- 2. The fixture must be installed by a qualified licensed electrician**



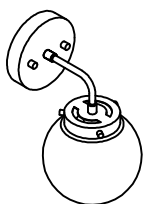
**1. Ensure main supply is switched off.**

**2. Put the anchoring (1) into the hole on the wall, have the screw (2) through the mounting bracket, and tighten with anchoring.**

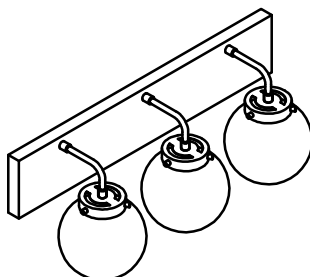
**3. Have the mounting screw (3) through the mounting bracket and screw into octagon box.**

**4. Connect the wires using wire nuts, tight mounting bracket and back plate using screws (4).**

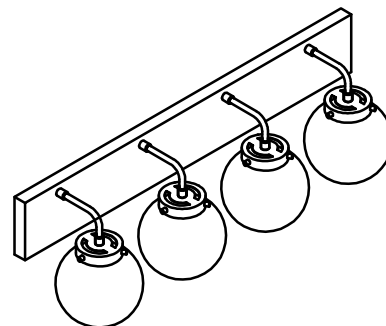
**5. Install the light bulb (not provided) to the socket, secure the glass shade by using screw (5).**



**WS1718-1CH/BKCL  
WS1718-1CH/BKOP  
WS1718-1AB/BKCL  
WS1718-1AB/BKOP**



**VL1718-3CH/BKCL  
VL1718-3CH/BKOP  
VL1718-3AB/BKCL  
VL1718-3AB/BKOP**



**VL1718-4CH/BKCL  
VL1718-4CH/BKOP  
VL1718-4AB/BKCL  
VL1718-4AB/BKOP**