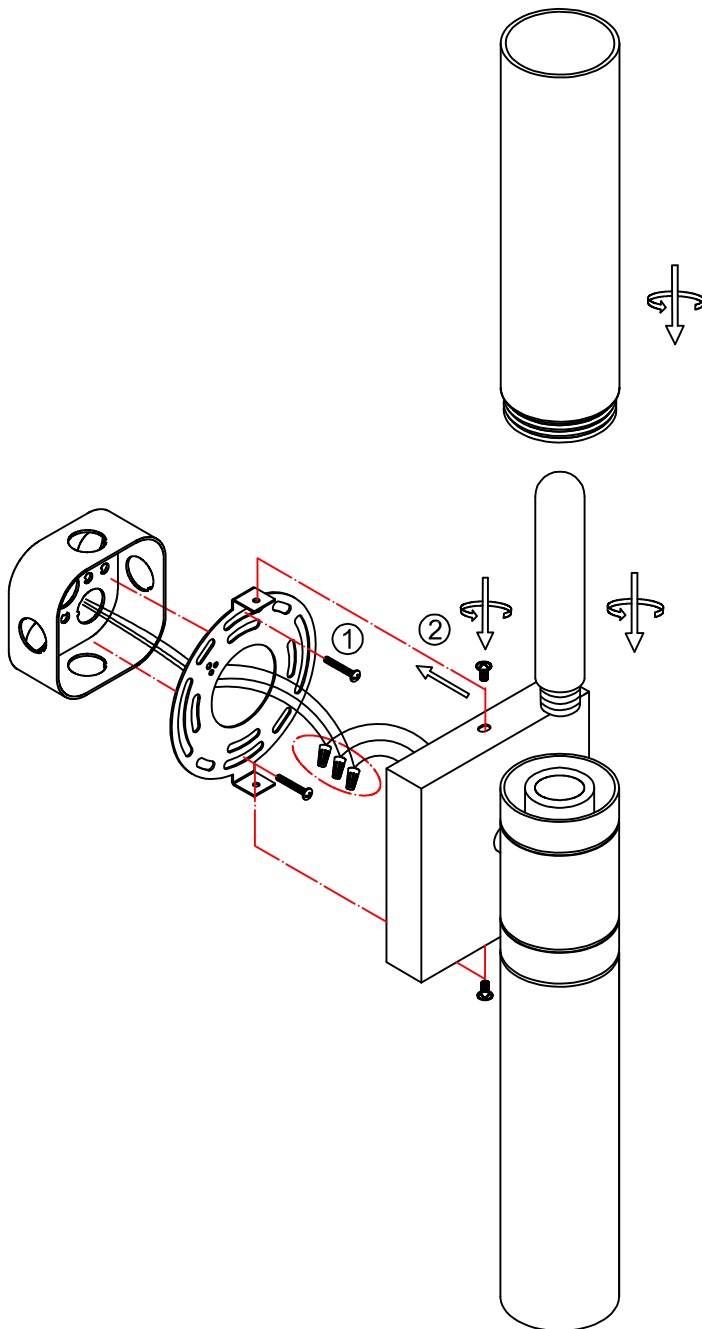
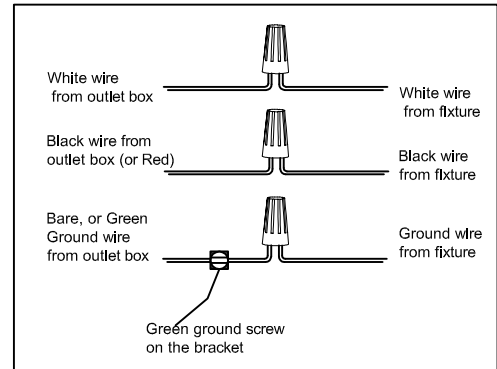


INSTRUCTION MANUAL

- 1. Always ensure the power is completely OFF before any installation or maintenance.**
- 2. The fixture must be installed by a qualified licensed electrician**

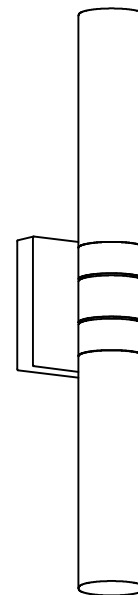


1. Ensure main supply is switched off.

2. Have the mounting screw (1) through the mounting bracket and screw into octagon box.

3. Connect the wires using wire nuts, tight mounting bracket and back plate using screws (2).

4. Install the light bulb (not provided) to the socket. Put the glass shade to the cylinder.



VL6321-E-BN-WH
VL6321-E-BK-WH